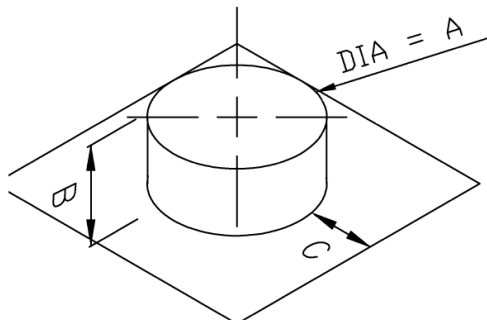
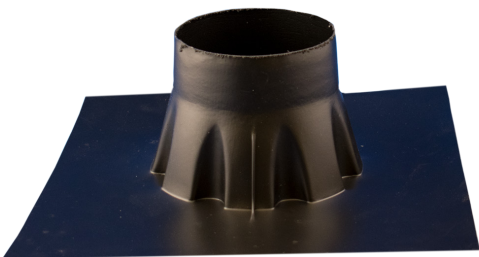


Data Sheet

Top Hat Details



Description

Principal Top Hats are used around service pipe penetrations to provide an effective gas tight seal.

Application

The base of the pre-formed unit should be sealed using Rhinoplast LT Jointstrip and overtaped at the edges with Girth Tape. A stainless steel Jubilee clip is available for the collar. Airtight seals should be formed around all service entry points.

Available Sizes

50mm
110mm
135mm
160mm

Available in rigid and flexible types.